



# Shell & Tube Heat Exchangers

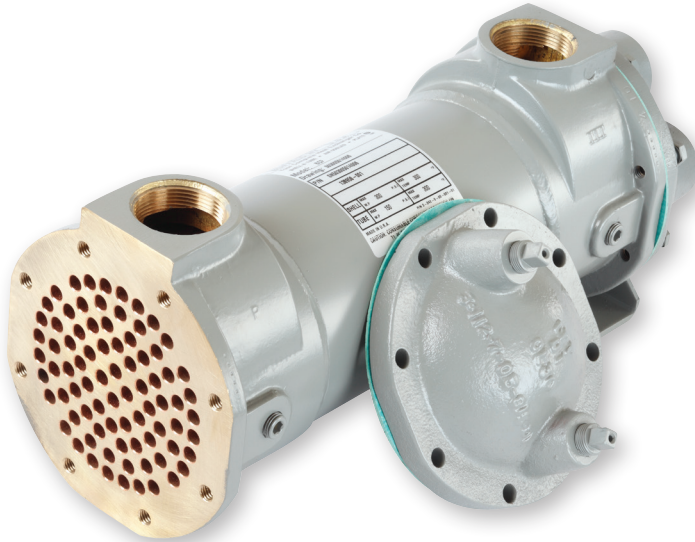
PRE-ENGINEERED SERIES: BCF/HCF/HFF

**S**outhgate  
Process Equipment, Inc.

Southgate Process Equipment, Inc.  
87 Hickory Springs Industrial Dr.  
Canton, GA 30115  
Phone: (770) 345-0010  
Email: [Sales@southgateprocess.com](mailto:Sales@southgateprocess.com)  
Website: [www.southgateprocess.com](http://www.southgateprocess.com)

Standard **X**change  
a xylem brand

## BCF/HCF/HFF



### MATERIALS

<b>SHELL</b>	Brass
<b>TUBES</b>	Copper with option for 90/10 or 70/30 CuNi Tube Diameter Options: 1/4", 3/8", and 5/8"
<b>HUBS</b>	Brass with optional SAE four bolts connections
<b>BONNETS</b>	Cast Iron with option for Cast Bronze
<b>FEET &amp; BOLTING</b>	Carbon Steel

### BCF/HCF/HFF STANDARD DESIGN CAPABILITIES

	DESIGN PRESSURE	DESIGN TEMPERATURE
<b>Tube Side</b>	150 psi 10.5 kg/cm <sup>2</sup>	300°F 148.9°C
<b>Shell Side</b>	300 psi 21.1 kg/cm <sup>2</sup>	300°F 148.9°C

### DETAILS

- Compact design with shell diameters 2" to 8", standard tube lengths 8" to 72" with custom tube lengths to 144".
- Available in 1, 2 & 4 tube side pass configurations.
- Expediting options are available please contact us for more information (770) 345-0010.

#### EXCHANGER TYPE:

Straight Tube  
Fixed Tubesheet

#### ADVANTAGES:

Less costly than removable bundle exchangers.

Provides maximum heat transfer surface area per given shell and tube size.

Easily interchangeable with designs of various manufacturers.

Flanged lip baffles ensure close tolerance, high efficiency and additional tube support.

Enlarged bundle entrance area of hub/tubesheet design lowers entrance velocity and pressure loss.

Tube side can be steam or mechanically cleaned.

Only tube side fluids exposed to gaskets.

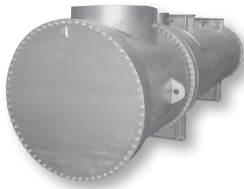
No packed joints.

#### LIMITATIONS:

No provision for differential expansion of tubes and shell.

Shell side may not be mechanically cleaned.

# Models of Efficiency



## CENTURY SERIES®

Engineered/  
customized heat  
exchangers for  
process and other  
heating/cooling  
applications.



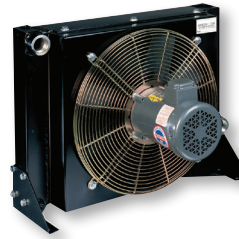
## BRAZEPAK®

Brazed plate  
heat exchanger.



## PLATEFLOW®

Gasketed plate  
& frame heat  
exchanger.



## AIREX® AND FANEX®

Air/oil, air/air,  
or air/water  
heat exchangers.



## PRE-ENGINEERED SERIES

BCF®/SSCF®/  
SX2000®/B300®  
Pre-engineered  
shell and tube  
heat exchanger.

## Xylem |'zīləm|

- 1) The tissue in plants that brings water upward from the roots;
- 2) a leading global water technology company.

We're a global team unified in a common purpose: creating advanced technology solutions to the world's water challenges. Developing new technologies that will improve the way water is used, conserved, and re-used in the future is central to our work. Our products and services move, treat, analyze, monitor and return water to the environment, in public utility, industrial, residential and commercial building services settings. Xylem also provides a leading portfolio of smart metering, network technologies and advanced analytics solutions for water, electric and gas utilities. In more than 150 countries, we have strong, long-standing relationships with customers who know us for our powerful combination of leading product brands and applications expertise with a strong focus on developing comprehensive, sustainable solutions.



### Southgate Process Equipment, Inc.

87 Hickory Springs Industrial Dr.  
Canton, GA 30115  
Phone: (770) 345-0010

Email: [Sales@southgateprocess.com](mailto:Sales@southgateprocess.com)

Website: [www.southgateprocess.com](http://www.southgateprocess.com)

