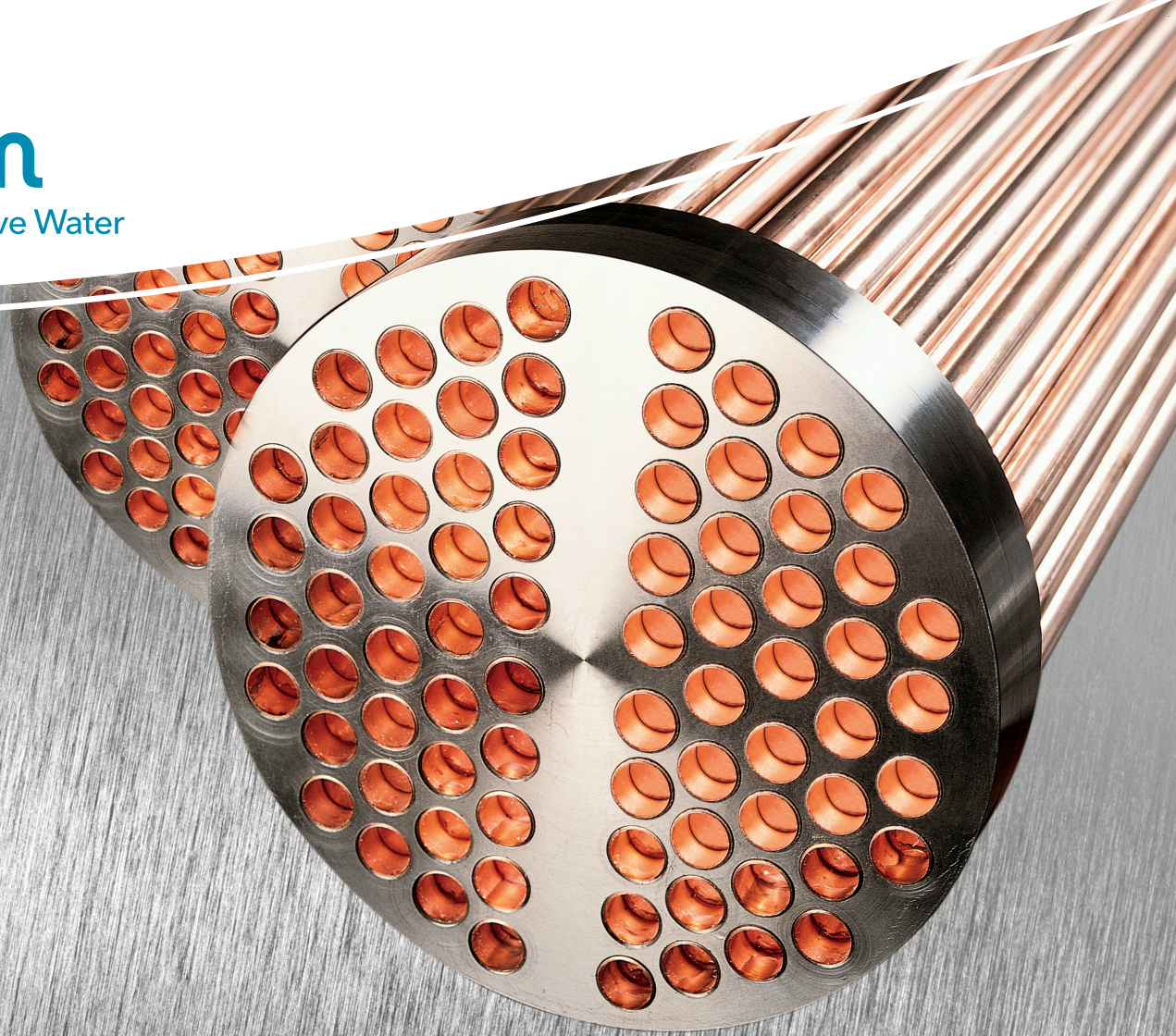


xylem
Let's Solve Water



Shell & Tube Heat Exchangers

ENGINEERED SERIES : CENTURY® C400 Series

Southgate Process Equipment, Inc.

87 Hickory Springs Industrial Dr.

Canton, GA 30115

Phone: (770) 345-0010

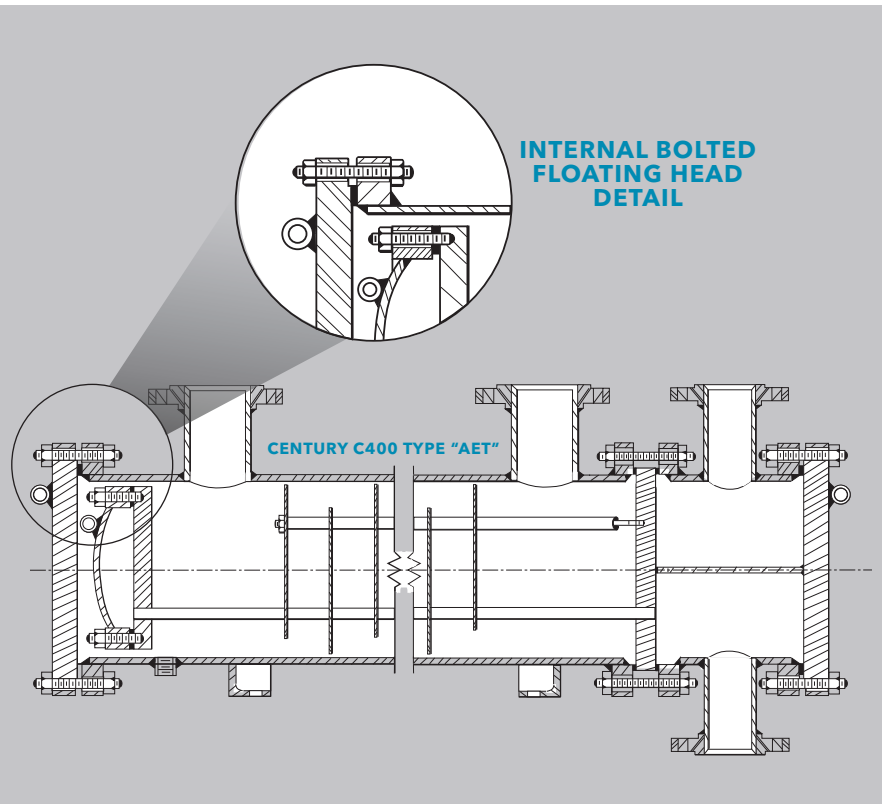
Email: Sales@southgateprocess.com

Website: www.southgateprocess.com

Southgate
Process Equipment, Inc.

Standard **X**change
a xylem brand

CENTURY® C400



CENTURY® C400 STANDARD DESIGN CAPABILITIES

	DESIGN PRESSURE	DESIGN TEMPERATURE
Tube Side	75 - 450 psi 517 - 3,102 kPa	-20 - 650°F -29 - 343°C
Shell Side	75 - 300 psi 517 - 2,068 kPa	-20 - 650°F -29 - 343°C

Note: Custom designs to 3,600 psi/24,816 kPa and 1000°F/538°C, depending on shell diameter and design temperature.

DETAILS

- Straight tube, internally bolted floating head, pull-through construction with removable bundle.
- Multi-pass tube arrangements for maximum efficiency over a wide variety of tube side flow volumes.
- Standard shell sizes from 8 inches through 42 inches in diameter; custom designs up to 60 inches in diameter.

ADVANTAGES:

Bundle can be removed from shell for cleaning or maintenance.

Lack of packed joints allows for handling volatile or toxic fluids.

Large bundle entrance area.

Allows for differential thermal expansion between shell and tubes.

Bundle can be pulled without removing floating head cover.

LIMITATIONS:

Less heat transfer surface area given shell and tube size than other removable bundle designs.

The costliest of all basic types of heat exchanger designs.

Gasket leak detection not possible on floating head.

TEMA Type AET or BET.

Can meet TEMA "B", "C" and "R", ASME Section VIII Div. 1 and ASME Section III "N" stamp.

MATERIALS

Standard Designs

Shells

- Shells - Steel, 304SS, 316SS, 304LSS, 316LSS up to 42-inch diameter

Bonnets/Channels

- Bonnets/channels - Steel, 304SS, 316SS, 304LSS, 316LSS, Cast Iron, Cast Bronze, Ductile Iron.

Tubesheets

- Tubesheets - Aluminum Bronze, 90/10 CuNi, Muntz, RNB, 304SS, 316SS, 304LSS, 316LSS Steel.

Tubes

- Tubes - Carbon Steel, Stainless Steel, Nickel and Nickel Alloys, Titanium and other Alloys. Bare and Lo-Fin Tubing.

CAPABILITIES

- Hydraulic tube expansion
- Seal and strength welding of tubes to tubesheet
- Expansion joints (flanged and flued head as well as bellows type)
- Surface finish analysis
- Heat transfer test laboratory (4,000 ft²)
- Helium leak testing
- Radiographic, ultrasonic and magnetic particle testing (sub-contracted)
- API oil flushing

DESIGN CAPABILITIES

Custom Designs

Materials

- Stainless steel(s) (including Alloy 20, 317SS, AL6XN, 904LSS, etc.)
- Hastelloy • Titanium • Monel
- 90/10 CuNi • 70/30 CuNi • Inconel
- Incoloy® • Avesta 254SMO

(Note: Weld qualifications may have to be developed)

Diameter

- Up to 42 inches for standard designs; custom designs up to 60 inches

Length

- Up to 30 feet for standard steel designs and 21 feet for standard stainless steel designs; custom designs up to 40 feet.

Temperature

- From -20°F (-29°C) up to 655°F (343°C) with standard designs; custom designs from -300°F (-184°C) up to 1000°F (538°C).

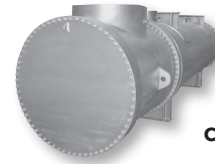
Weight

- 50 tons maximum

SPECIFICATIONS

- ASME Section III "N" stamp
- ASME Section VIII Division 1
- TEMA Classes "B", "C" and "R"
- API
- ABS
- US Navy (Mil C-15730)
- The Pressure Equipment Directive (97/23/EC)

MODELS OF EFFICIENCY



CENTURY SERIES®



BRAZEPAK®



PLATEFLOW®



AIREX® AND FANEX®



PRE-ENGINEERED SERIES

 **Southgate**
Process Equipment, Inc.

Southgate Process Equipment, Inc.

87 Hickory Springs Industrial Dr.

Canton, GA 30115

Phone: (770) 345-0010

Email: Sales@southgateprocess.com

Website: www.southgateprocess.com