



Shell & Tube Heat Exchangers

PRE-ENGINEERED SERIES:SSCF

Southgate
Process Equipment, Inc.

Southgate Process Equipment, Inc.
87 Hickory Springs Industrial Dr.
Canton, GA 30115
Phone: (770) 345-0010
Email: Sales@southgateprocess.com
Website: www.southgateprocess.com

Standard **X**change
a xylem brand

DETAILS

- Compact design with shell diameters 2" to 8", standard tube lengths 8" to 72" with custom tube lengths to 144".
- Available in 1, 2 & 4 tube side pass configurations.
- Expediting options are available please contact us for more information (770) 345-0010.
- ASME Code options available.
- Flanged connection options available.

EXCHANGER TYPE:

Straight Tube
Fixed Tubesheet

ADVANTAGES:

Less costly than removable bundle exchangers.

Provides maximum heat transfer surface area per given shell and tube size.

Easily interchangeable with designs of various manufacturers.

Flanged lip baffles ensure close tolerance, high efficiency and additional tube support.

Enlarged bundle entrance area of hub/tubesheet design lowers entrance velocity and pressure loss.

Tube side can be steam or mechanically cleaned.

Only tube side fluids exposed to gaskets.

No packed joints.

LIMITATIONS:

No provision for differential expansion of tubes and shell.

Shell side may not be mechanically cleaned.

SSCF/SSCF-C



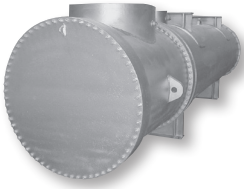
MATERIALS

SHELL	Stainless Steel 316
TUBES	Stainless Steel 316 with option for Copper, 90/10 or 70/30 CuNi Tube Diameter Options: 1/4", 3/8", and 5/8"
HUBS	Cast Stainless Steel 316
BONNETS	Cast Stainless Steel 316 with Cast Iron and Cast Bronze options
FEET & BOLTING	Carbon Steel with Stainless option

SSCF/SSCF-C STANDARD DESIGN CAPABILITIES

	DESIGN PRESSURE	DESIGN TEMPERATURE
Tube Side	150 psi 10.5 kg/cm ²	450°F 232°C
Shell Side	225 psi 15.8 kg/cm ²	450°F 232°C

Models of Efficiency



CENTURY SERIES®

Engineered/
customized heat
exchangers for
process and other
heating/cooling
applications.



BRAZEPAK®

Brazed plate
heat exchanger.



PLATEFLOW®

Gasketed plate
& frame heat
exchanger.



AIREX® AND FANEX®

Air/oil, air/air,
or air/water
heat exchangers.



PRE-ENGINEERED SERIES

BCF®/SSCF®/
SX2000®/B300®
Pre-engineered
shell and tube
heat exchanger.

Xylem |'zīləm|

- 1) The tissue in plants that brings water upward from the roots;
- 2) a leading global water technology company.

We're a global team unified in a common purpose: creating advanced technology solutions to the world's water challenges. Developing new technologies that will improve the way water is used, conserved, and re-used in the future is central to our work. Our products and services move, treat, analyze, monitor and return water to the environment, in public utility, industrial, residential and commercial building services settings. Xylem also provides a leading portfolio of smart metering, network technologies and advanced analytics solutions for water, electric and gas utilities. In more than 150 countries, we have strong, long-standing relationships with customers who know us for our powerful combination of leading product brands and applications expertise with a strong focus on developing comprehensive, sustainable solutions.



Southgate Process Equipment, Inc.

87 Hickory Springs Industrial Dr.

Canton, GA 30115

Phone: (770) 345-0010

Email: Sales@southgateprocess.com

Website: www.southgateprocess.com